

DESIGNING FOR CONSERVATION **DESIGNING FOR DEVILS**

BY
ZOOLOGIST KATRINE FRIHOLM, COPENHAGEN ZOO
KF@ZOO.DK

&



KEEPER ZACO SONNE – **ZS@ZOO.DK** (HERE ALSO ANDROO) CURATOR FLEMMING NIELSEN – **FN@ZOO.DK**

zoo

THE COPENHAGEN DEVILS

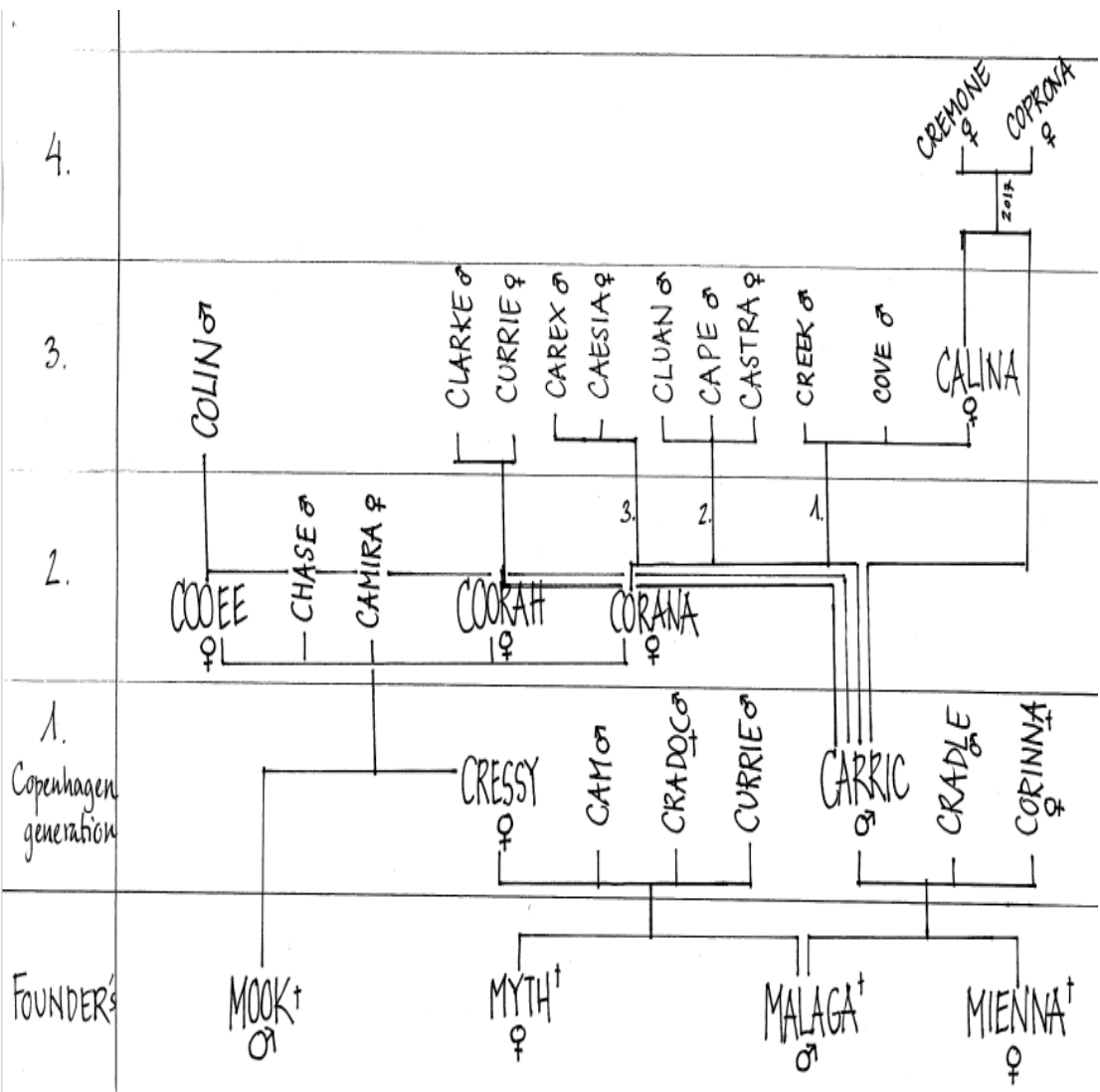
- Start 2006 with 2,2 from Tasmania as a present To our Tasmanian crown princess's first child.
The start was hard.
- 2012: 2,2 new founders from Trowunna Wildlife sanctuary
- 2013: 7 young .
- 2019: 13,12 devils have been bred in Cph
- All 25 joyes born in the first enclosure.

Today we have breeding facility with 5, 10 individuals in 6 outdoor enclosures and two Indoor facilities.

We have ambassador-status in “ Save the tasmanien devil-programme”.



OUR DEVILS



FIRST ENCLOSURE- 2,2. 2006

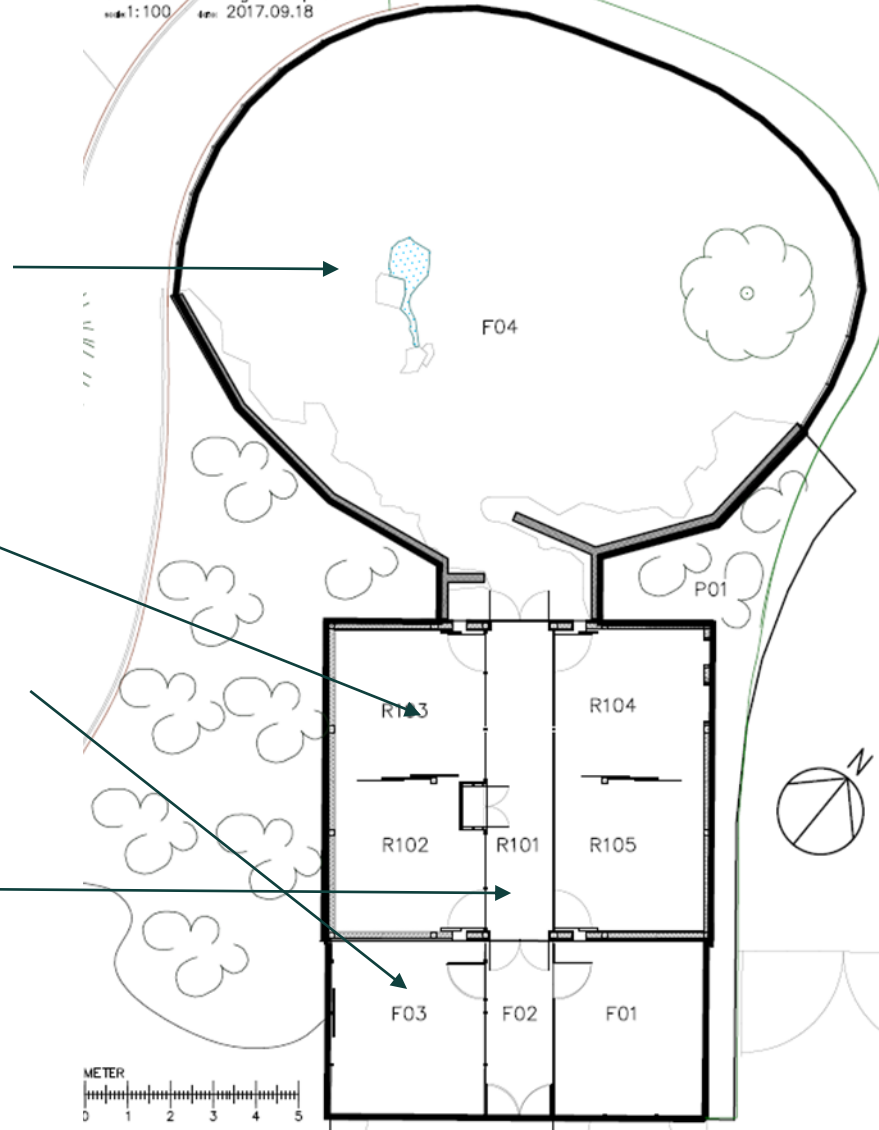
Bygning nr. 117, Tasmanske pungdjæve
Situations- og stueplan
skala 1:100 dato 2017.09.18

1 outdoor enclosure: 153 m2. visible by guests, through glass.

Behind the scenes:
4 indoor enclosures: 12 m2/ each

2 outdoor enclosures- 14,5 m2 each

Pass way – used by the males in mate selection

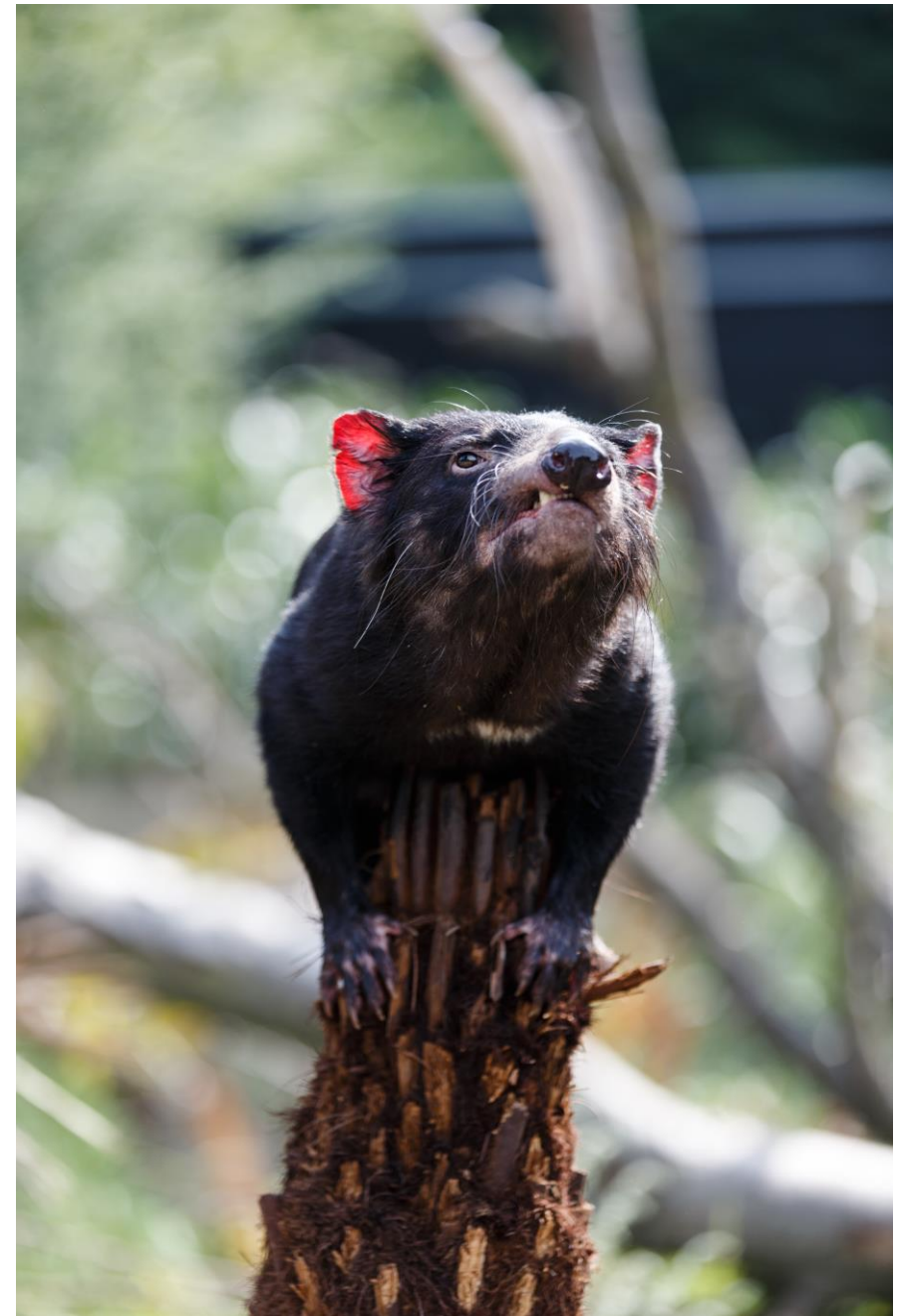


FIRST ENCLOSURE- BEHIND THE SCENES



THESE FIRST 284 M2 WORKED

— FOR KEEPERS AND OUR FEW DEVILS

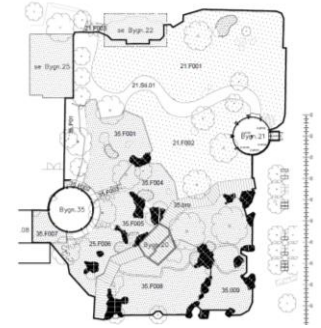




- OFTEN THE GUEST EXPERIENCE WAS THIS



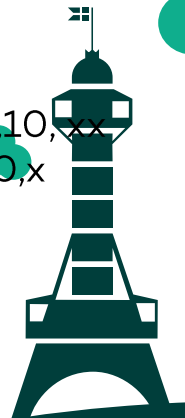
SO... WITH MORE DEVILS BORN AND IN NEED OF A BETTER GUEST EXPERIENCE...



3200 m2
2,9 mio eu (ex vat)

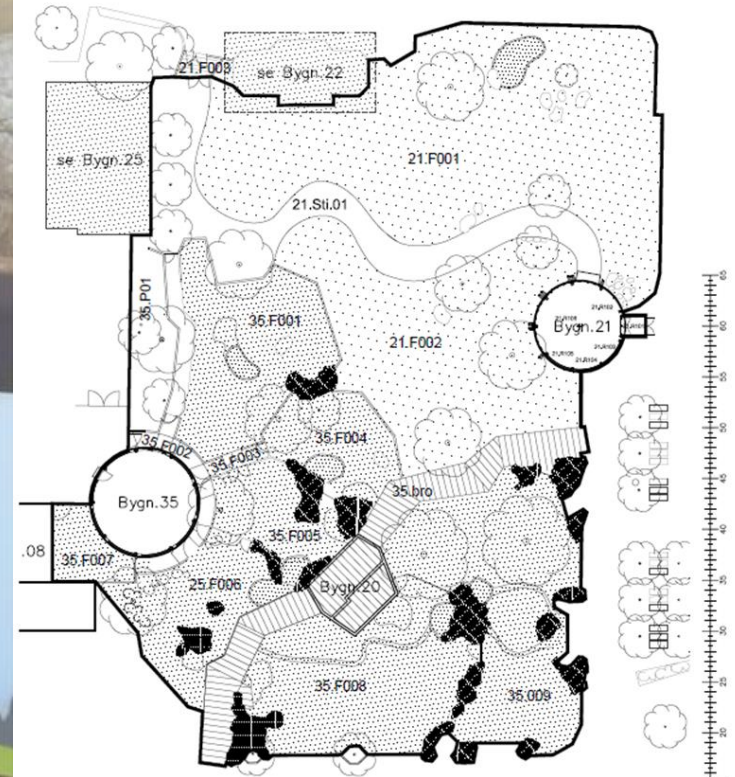
And Co-species: 1,10 Bennets Wallabies, 2,10, xx
Eastern grey kangaroos (tasm. Subsp), 2,10, x
Tasmanien Common wombats

ZOO COPENHAGEN Nyt Tasmanien-anlæg
Fugleperspektiv Dato: 13.06.2014
Finn Jørsboe - Landskabsarkitekt MDL



ZOO

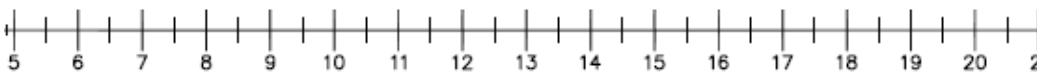
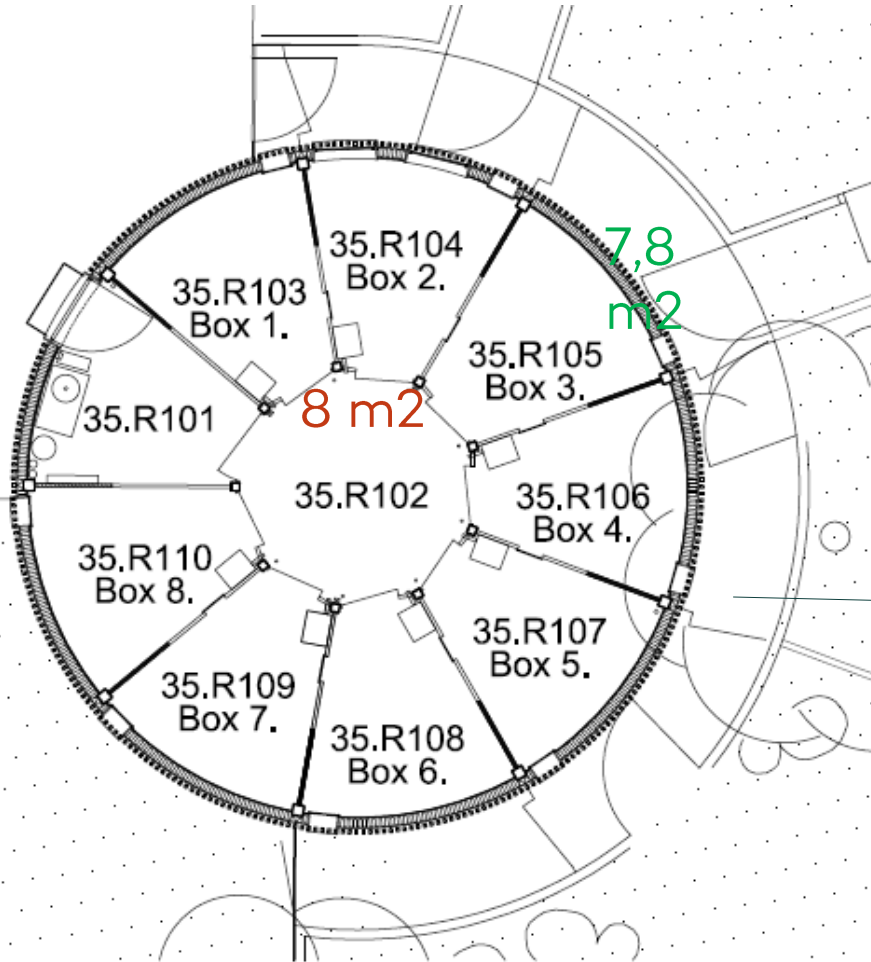
AND FOR THE GUEST

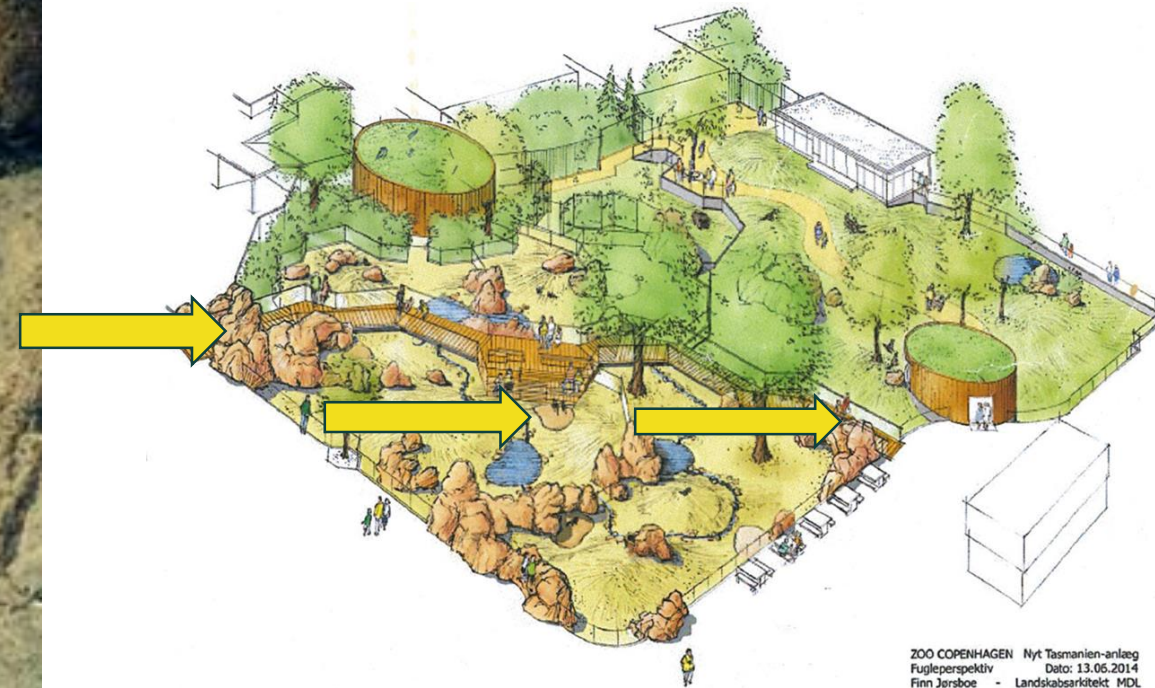


ZOO



"ROUND BUILDINGS, PLEASE"





ZOO COPENHAGEN Nyt Tasmanien-anlæg
Fugleperspektiv Dato: 13.05.2014
Finn Jersboe - Landskabsarkitekt MDL

ZOO



zoo

ROCKS ACTUALLY **WORKS** HERE – AS BARRIER, SCOUT-PLACE AND BRINGING THE ANIMALS UP CLOSE



- IN EYE-HEIGHT WITH THE GUEST



BUT NO GAMBLING WITH THE PROVEN FEMALES

- We have not yet moved the proven females to the new exhibits. But to have breeding in both exhibits is a great opportunity.

This fall, when the 10 C degrees is secured, we move 2 out of 5 high optional females and hopes for joyes in the new house also.



COPENHAGEN DO AND DONT'S – FOR BREEDING DEVILS IN A ZOO.

- **DO GIVE THEM :**

- Quit environment and 10 C when giving birth
- Easy mate-selection: pass ways in the stable and room for several males .
- Enough enclosures for each females with young, males, and groups of young.
- Heated Caves – that's is a win-win.
- Correct desiged Resting and breeding boxes.
- Look through barriers – also a win-win
- Places to scout.

- **DON'T (NECESSARY) GIVE THEM**

- Round stables ☺
- heated indoor stables– heated/ cooled caves outdoor is good
- An enclosure each; Devils are surprisingly social in certain parts of their young life.
- Draft. A big no go.
- Climate: never more than 20 C (best 10) when giving birth.

. TURN UP THE GUEST EXPERIENCE – DEVILS ARE GREAT TO LOOK AT AND LISTEN TO.

AND...BREEDING DEVILS TAKES EXPERIENCE SHARED BY NETWORKING-

SO... DON'T BE A STRANGER – VISIT CPH. IF THE DEVILS COME KNOCKING



ZOO

A photograph of two Tasmanian devils in an enclosure. One devil is standing on its hind legs, reaching up to touch a glass barrier. The other is sitting on the ground, looking through the glass. In the background, there is a large, multi-tiered wooden structure, possibly a staircase or a platform, also covered in glass. The ground is covered with dry leaves and mulch.

zoo

A world to explore

THANK YOU