





The Orangutan Haven in Sumatra; Creating Naturalistic Islands for Welfare and Education

Ian Singleton, Ph.D

Conservation Director,

PanEco - SOCP





SUMATRAN ORANGUTAN
CONSERVATION PROGRAMME

Sumatran Orangutan Conservation Programme

- >100 full time staff
- 10 main field sites



SOCP ORANGUTAN QUARANTINE CENTRE

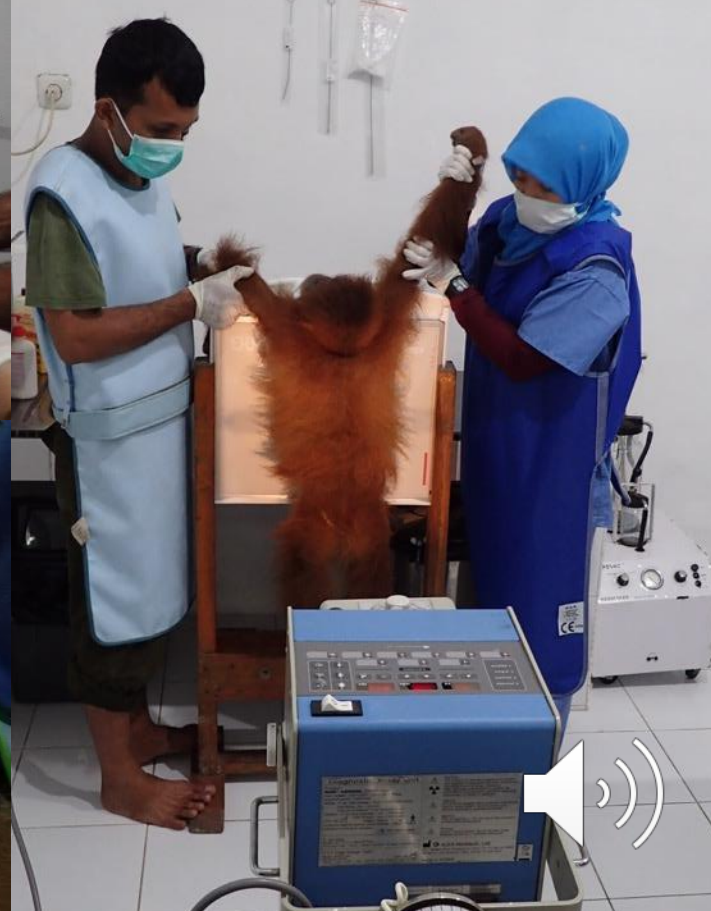
Near Medan, North Sumatra



Fully equipped medical clinic



SOCP Orangutan Quarantine Centre: Medical Checks





- Well ventilated and roomy interior
- Easy to maintain - good hygiene












Knock down cages for
young infants and
intensive care





Large Socialisation
Cages at rear of site




Newer unit on left connected
to old via tunnel at right





Panel style construction –
easier to repair





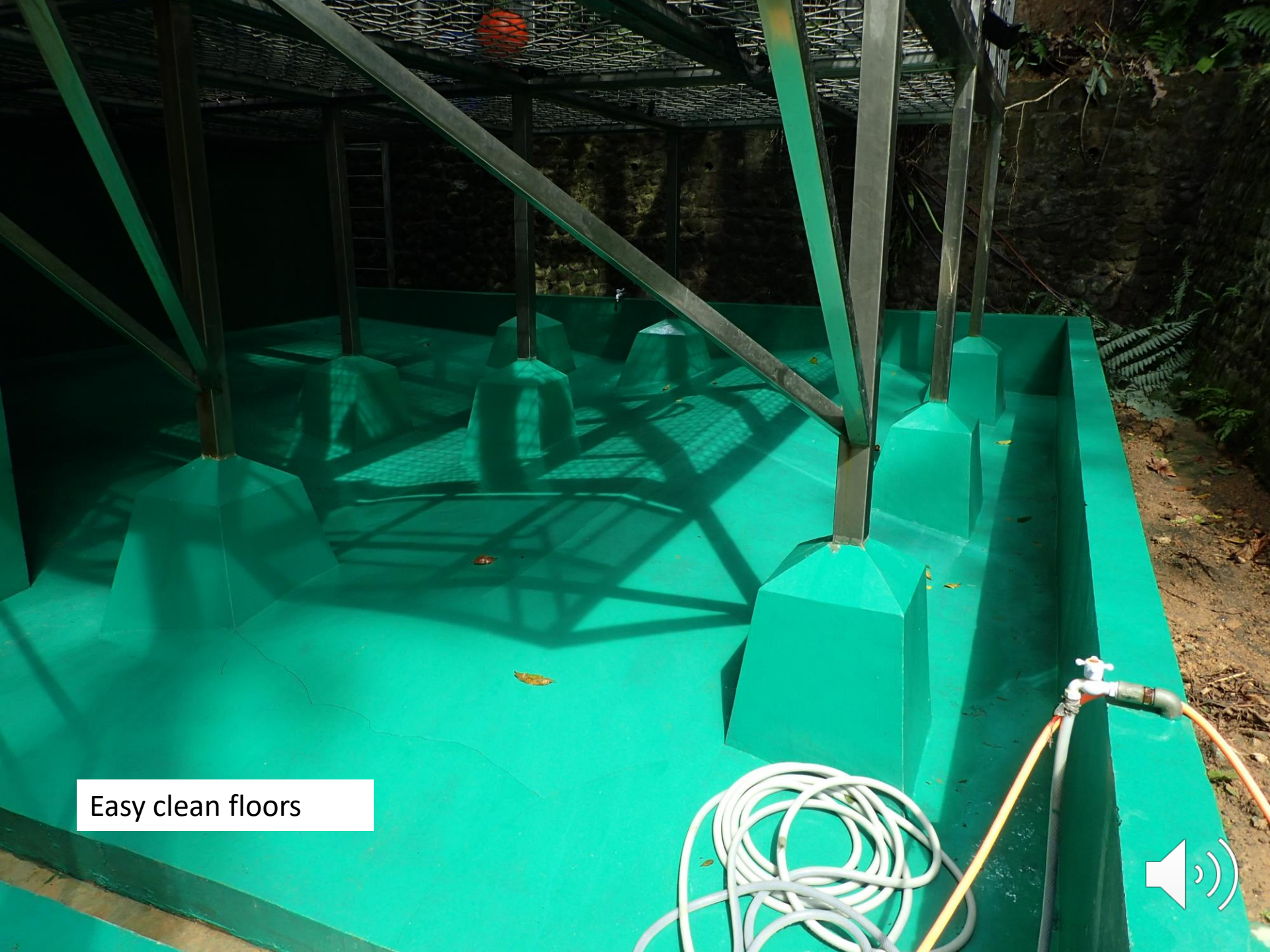
Large adult male
holding facility





Woven stainless
steel construction





Easy clean floors





Old long term
accommodation



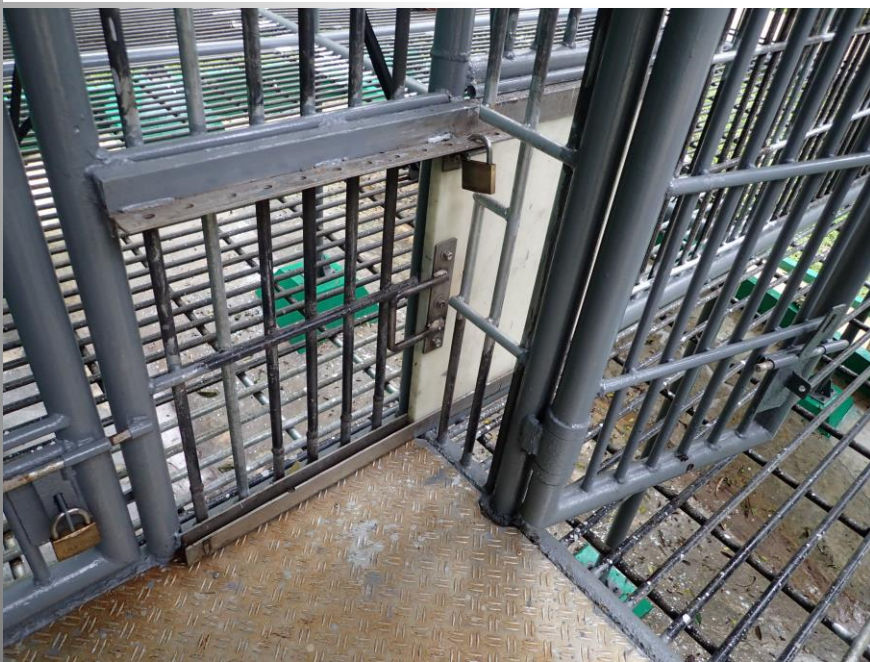
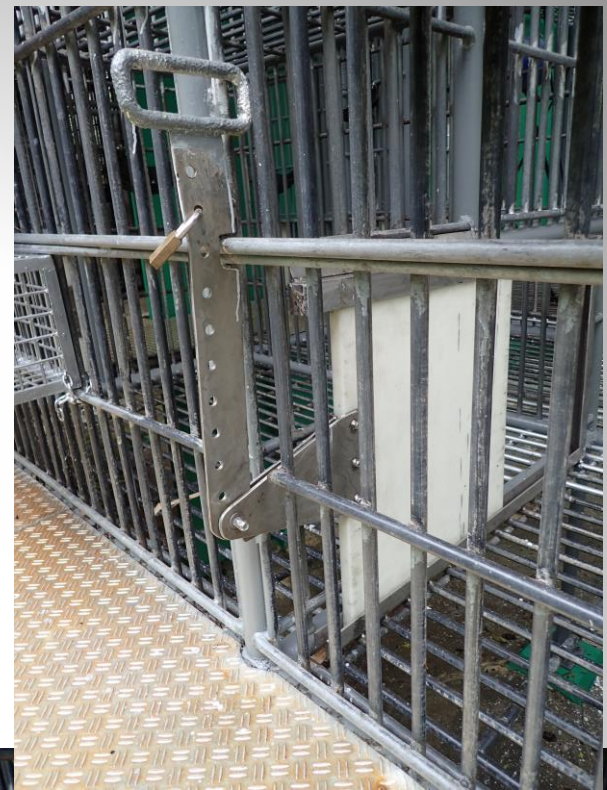


No contact and no
ability to throw/roll
items between cages





Animal doors all extremely simple and low maintenance





All just push pull, either 'in' runners or
hangin 'on' runners –

No pulleys, wheels etc



Specialist infant facility :
24-hour care



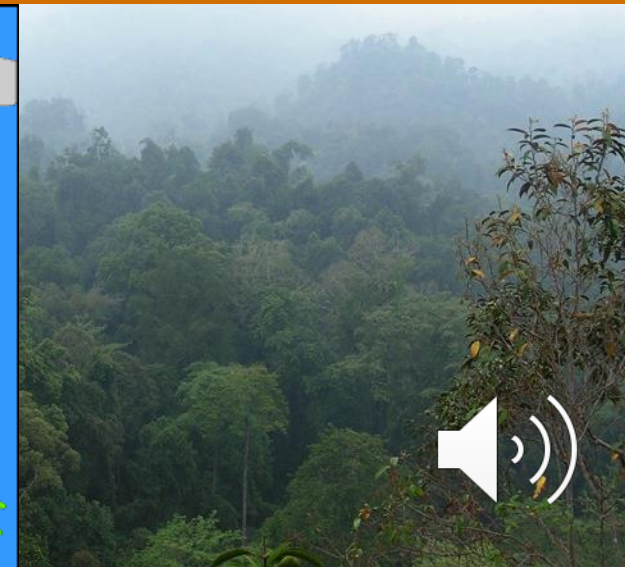


Jambi Reintroduction Centre

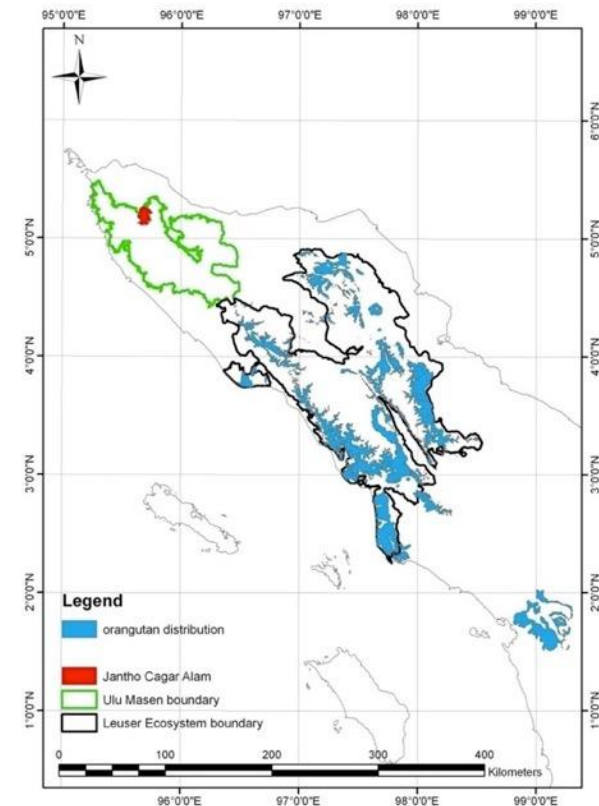
- Bukit Tigapuluh National Park
- 180 released since 2003



FRANKFURT
ZOOLOGICAL
SOCIETY



Staff camp



Jantho Reintroduction Centre – Aceh Province

- Jantho Pine Nature Reserve
- 114 released since 2011



Orangutan facilities – across the river



LEUSER

Shot 62 times with an
air rifle!

DEK NONG

Chronic arthritic
condition



KRISMON 18 years solitary confinement!



Photo courtesy Orangutan Information Centre








SUMATRAN ORANGUTAN
CONSERVATION PROGRAMME



ORANGUTAN HAVEN


A Unique Environmental Education
Resource



A photograph of a large, naturalistic enclosure for orangutans at Jersey Zoo. The enclosure features a body of water in the foreground, surrounded by dense green vegetation and tall grasses. In the background, there are several large, complex wooden structures with ropes and nets, designed for climbing and play. The sky is blue with some clouds.

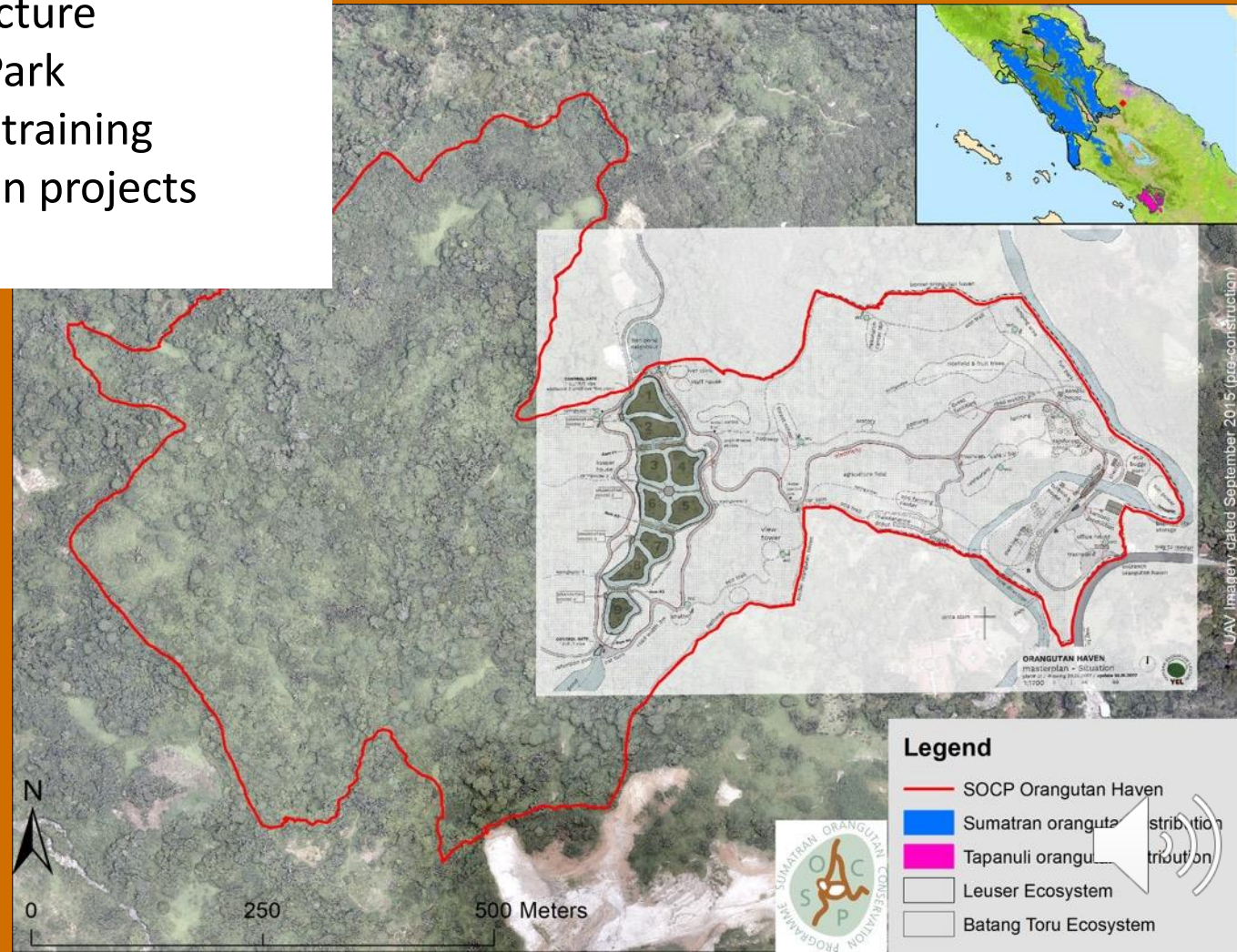
Instead of metal cages – new naturalistic homes for these orangutans.

Jersey Zoo
British Channel Islands



... And so much more!

1. Orangutan Islands – long term
2. Rainforest Visitor Centre
3. Forest School Education Centre
4. Ecology Centre (universities etc)
5. Sustainable Architecture
6. Green Technology Park
7. Organic agriculture training
8. Species conservation projects
9. Etc...



Stage 1 Development



SK-03

Orangutan Haven, Sumatra

Stage 1 Plan

Green and Dale Associates
Landscape Architects & Ecological Designers
1st Floor, 100, Jalan Sultan
Kuala Lumpur, Malaysia
info@greenanddale.com.my
www.greenanddale.com.my



EARTH 4 ORANGUTANS
GREEN AND DALE ASSOCIATES

Scale 1:750 @ A1
July 2013



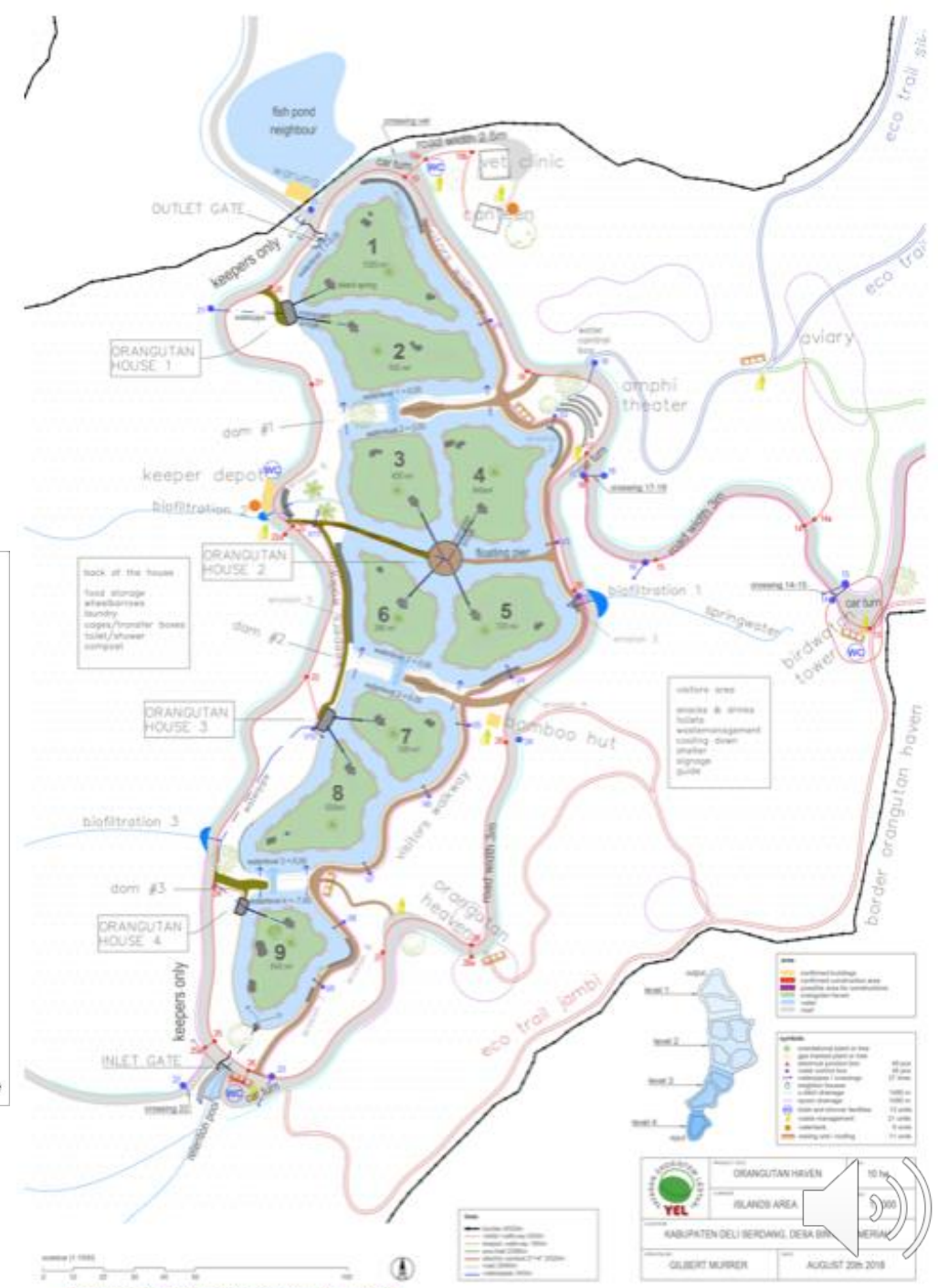
Entrance Facilities



Islands



Initial concept below and
actual realization on right

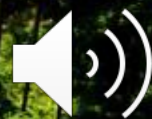


50 ha mixed agro-forest landscape
Just 30 minutes from Medan – 4 million people











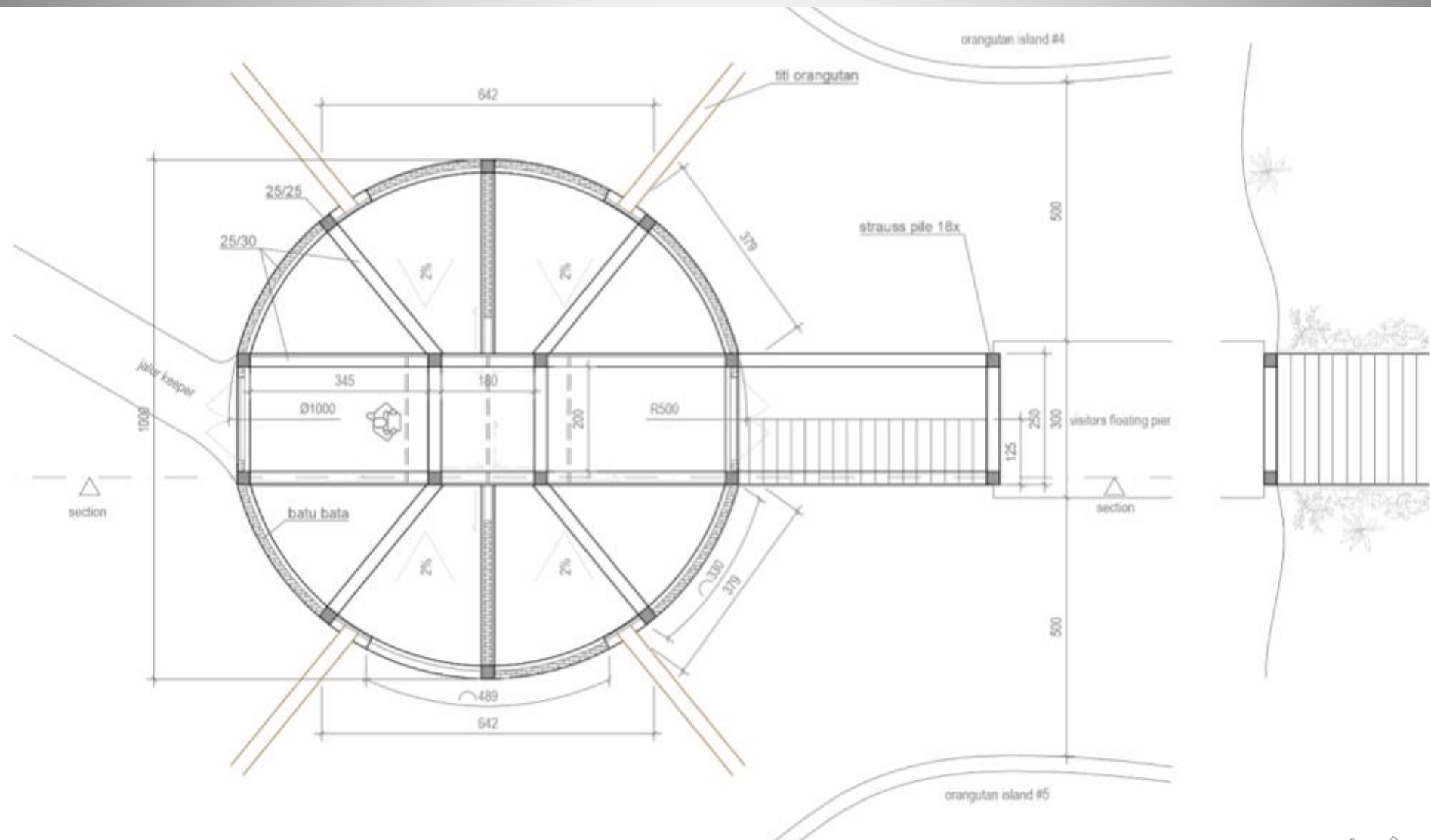


9 islands due for completion in 2019



Orangutan House 2
– serving 4 islands





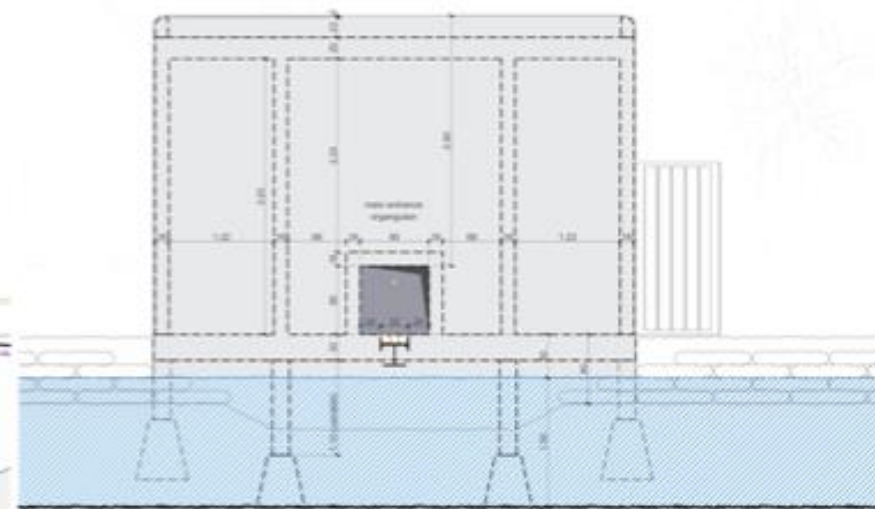
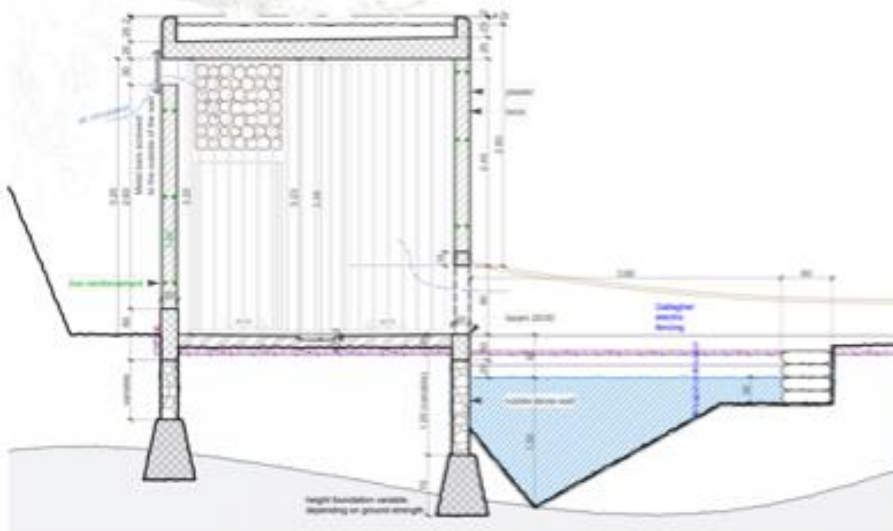
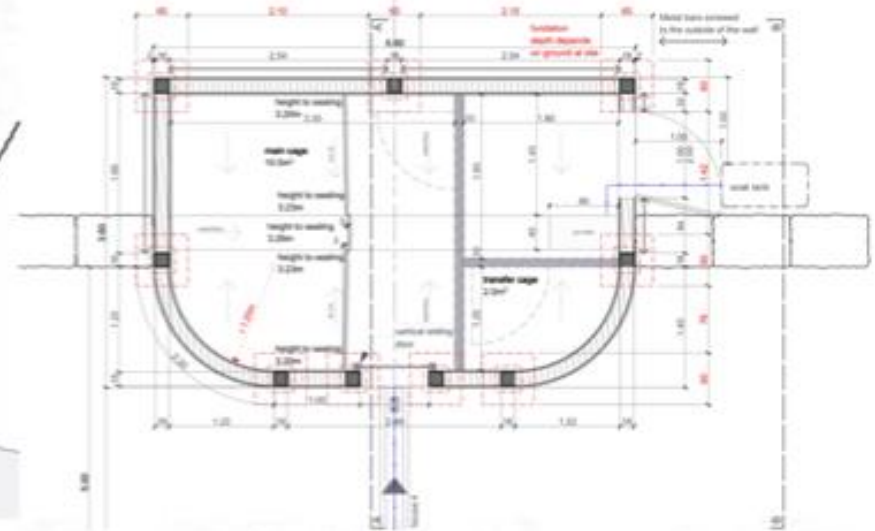
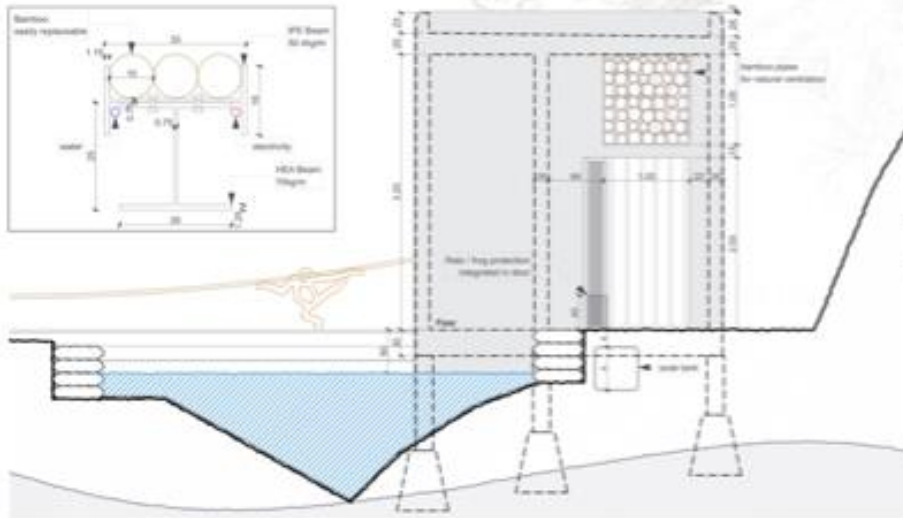


Orangutan House 3
– serving 2 islands



Orangutan House 4
– serves 1 island





ORANGUTAN HAVEN
islands - House #4
plan 45 / drawing 28.11.2017 / update 18.08.2018
1:50 0 1 2

Executorial drawing for the Orangutan House 4 by August 2018




Keeper access



Experiments in
rendering!



A small, rectangular building constructed from red bricks. It features a roof made of dark corrugated metal supported by a wooden frame. The front wall has two large, light-colored metal doors with circular decorative panels. To the left of the doors, the brick wall is punctuated by several small, dark, rectangular openings. The building is situated on a dirt path, and the background is filled with dense tropical foliage. A white text box is overlaid on the lower-left side of the image.

Keeper depot and
fruit store!





Simple Veterinary Clinic



Top reservoir (below)
and micro-hydro scheme (right)



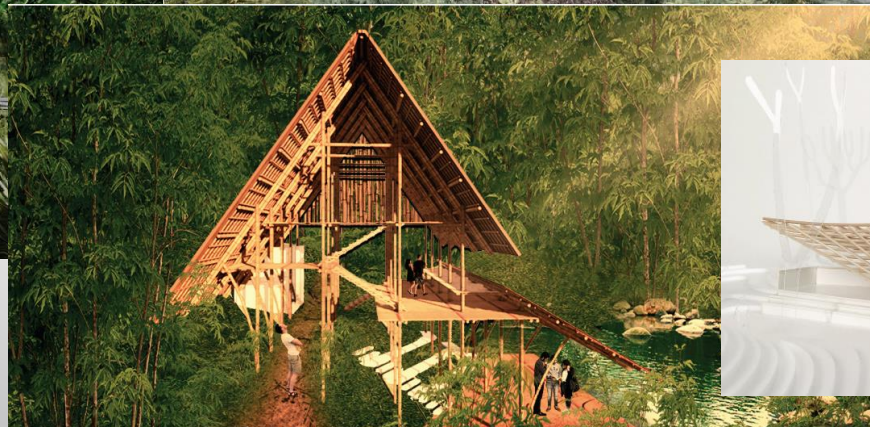


Eco-Architecture

Every building/facility should be an exhibit in itself











ORGANIC FARM; teaching and training resource

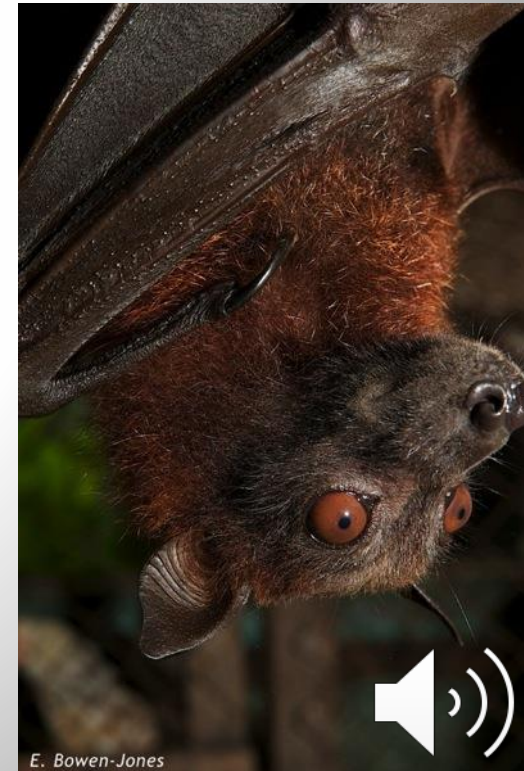
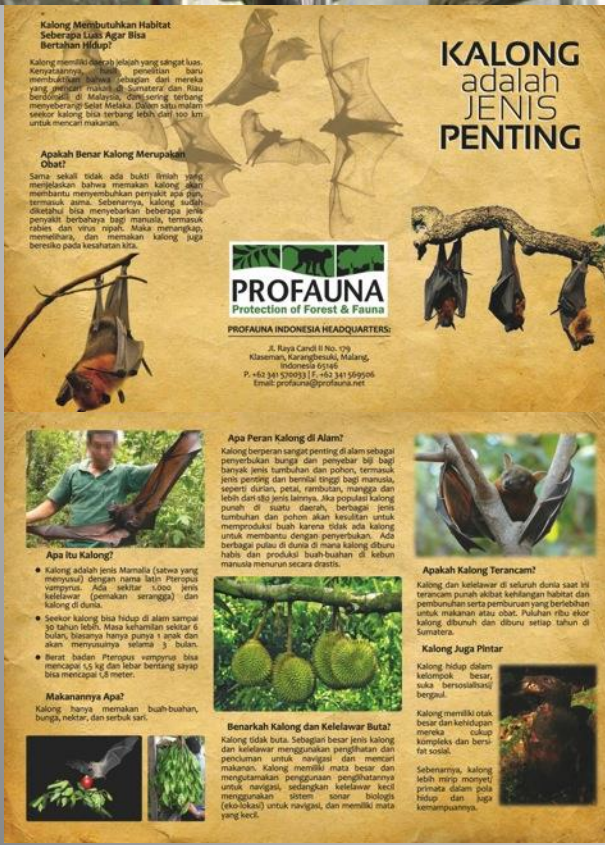






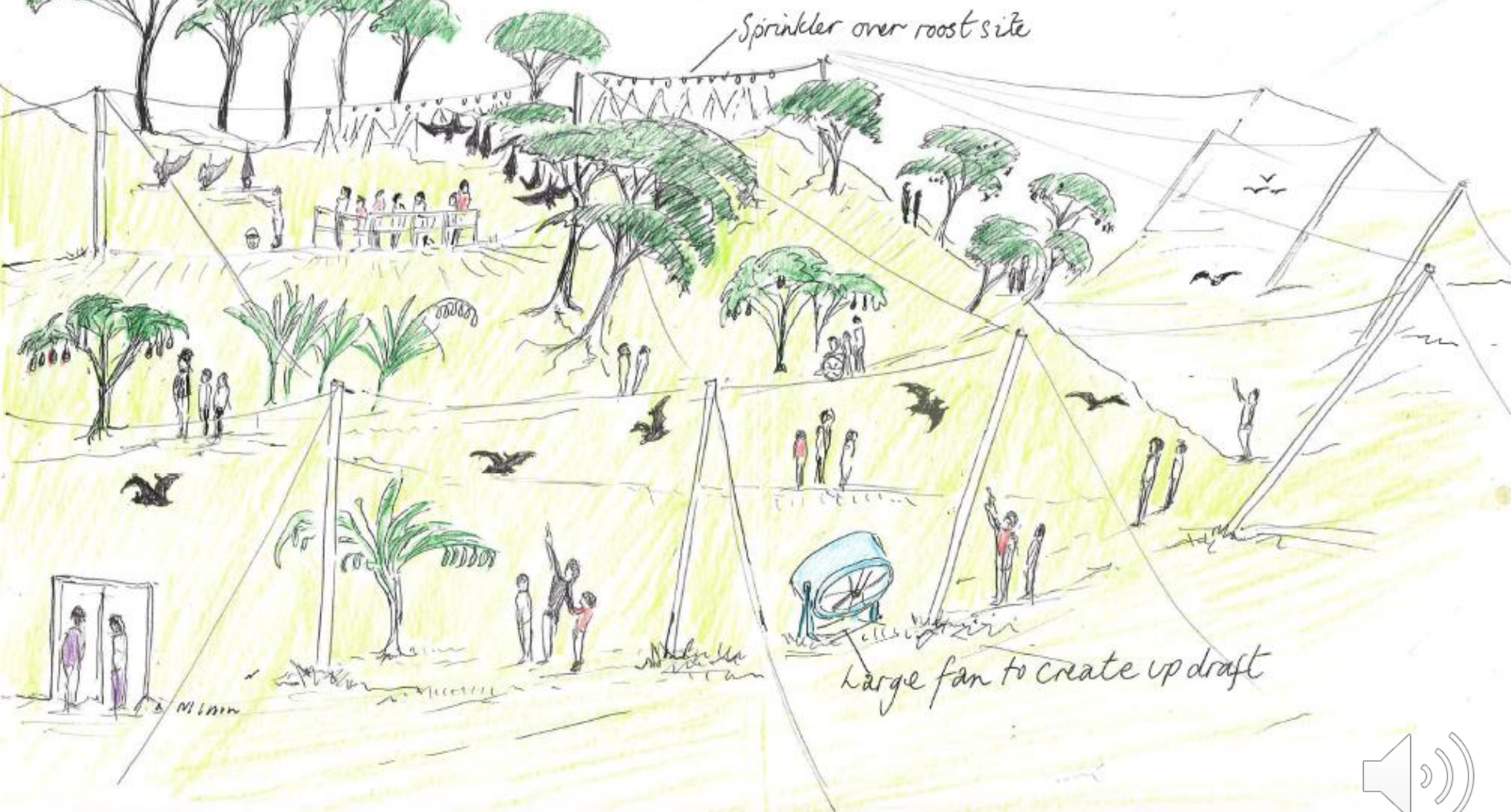
WILDLIFE TRADE

- Change perceptions of both buyers and sellers
- Reduce demand for wildlife generally

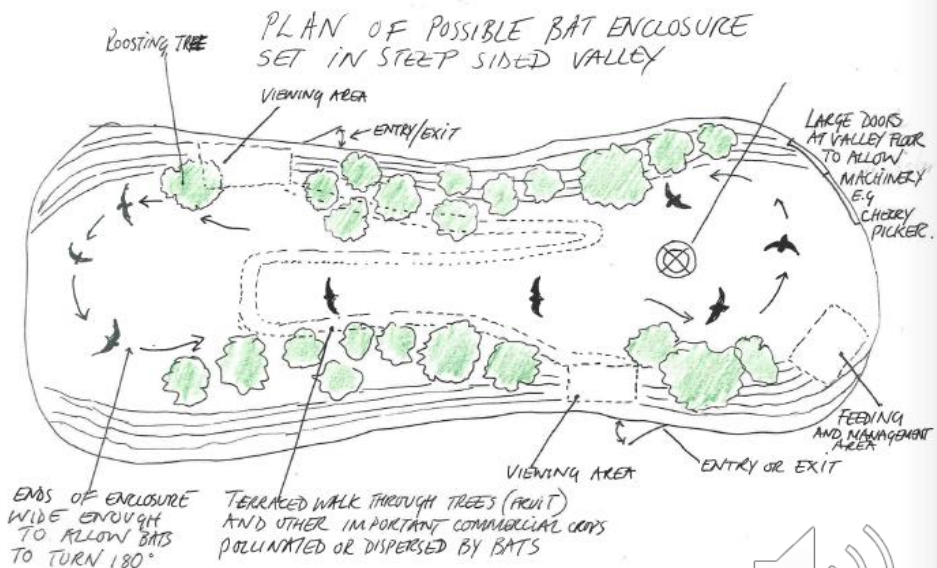
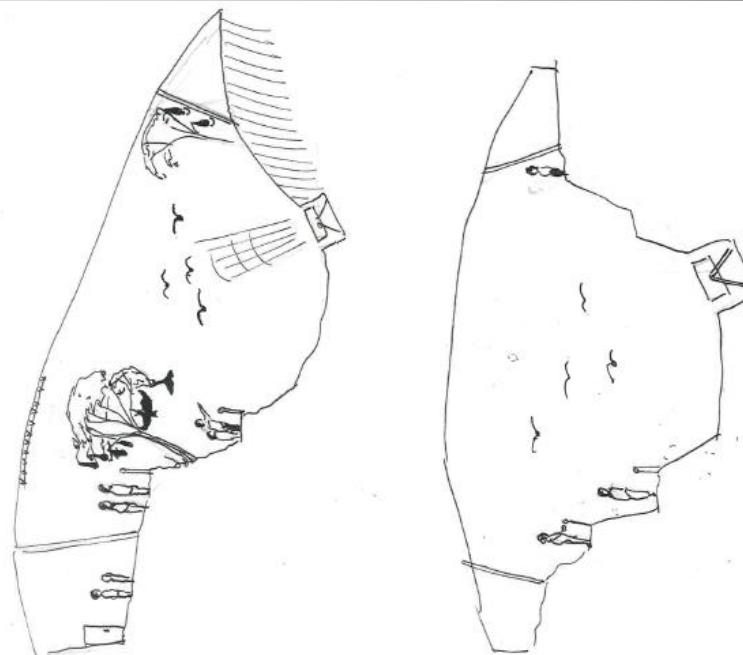
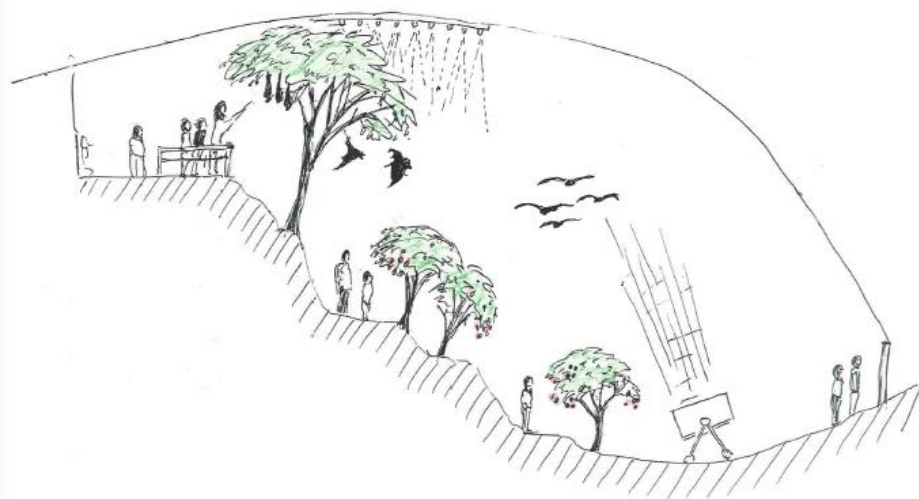
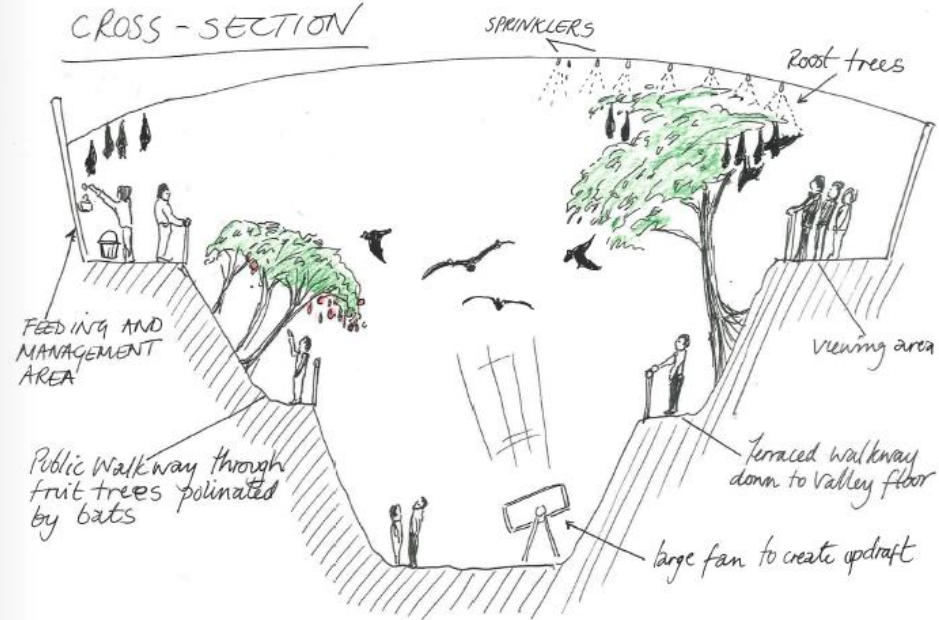


E. Bowen-Jones

POSSIBLE PLAN FOR BAT ENCLOSURE AT HAVEN



CROSS - SECTION





Jalan Bintang wildlife market – Medan, Sumatra

87D



Aviaries to support Asian Songbird Conservation Strategy



- Total build: 788m²
- 23 Breeding aviaries: 520m²
- 3 pre-release aviaries: 268m²
- Keeper building: 38m²

costs: 58,000 Euros





PLAN IS TO MODEL THE NEW CIKANANGA FACILITY IN JAVA

www.cikanangawildlifecenter.com



Photo : Andrew Owen, Chester Zoo





Photo : Andrew Owen, Chester Zoo





2018 : Manajer Stasiun
Reintroduksi Jantho dan
Manajer Karantina training
di Durrell Wildlife
Conservation Trust - UK





HUGE VISITOR POTENTIAL

- Large nearby city of Medan
- Domestic & International visitors





The Haven is already being used by local and Medan schools





TRAINING & COURSES



University of North
Sumatra :
Architecture faculty
Aug 2017



Local Employment & livelihoods

- currently around 70 temporary labour force
- 20 full time staff
- many more in future
- volunteers : 'intercultural exchange!'



PanEco



Thank You!



www.sumatranorangutan.org



Sumatran Orangutan Conservation
Programme



SOCP_tweets



SOCP_official

